

2023 annual report to the Community

John Hartley School B-6 and John Hartley B-6 Children's Centre

John Hartley School B-6 number: 1901

John Hartley B-6 Children's Centre number: 1423

Partnership: Peachey



School principal:

Joanna Everett



Signature

Date of endorsement:

20/02/2024



Context Statement

John Hartley School B-6 caters for students from R-6. At the time of this report, the enrolment in 2023 is 587. John Hartley School B-6 is classified as Category 2 on the Department for Education Index of Educational Disadvantage. At the time of this report, the school population includes 14% Aboriginal students, 18% students with disabilities, 11% students with English as an additional language or dialect (EALD) funded background, 2% children/young people in care. Further information about the school is available on the school's website (including its context statement), as well as the My School website.

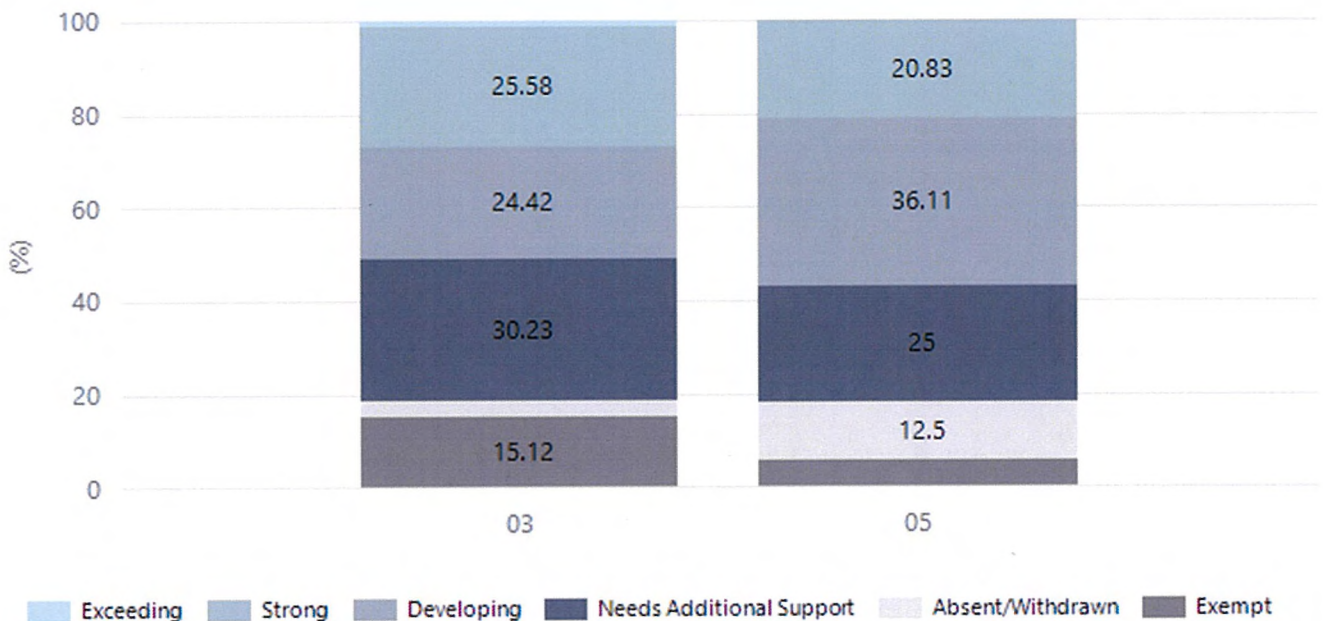
Information about John Hartley B-6 Children's Centre is available on the centres website, as well as the Australian Childrens Education and Care Quality Authority (ACECQA) website.

Performance Summary

NAPLAN Proficiency

In 2023, the Australian Curriculum, Assessment and Reporting Authority (ACARA) - a Commonwealth Independent statutory authority - announced changes to NAPLAN performance reporting. This new way of reporting by ACARA that NAPLAN results from 2023 will not be comparable to previous years. The new approach replaces the previous numerical NAPLAN bands and the national minimum standard.

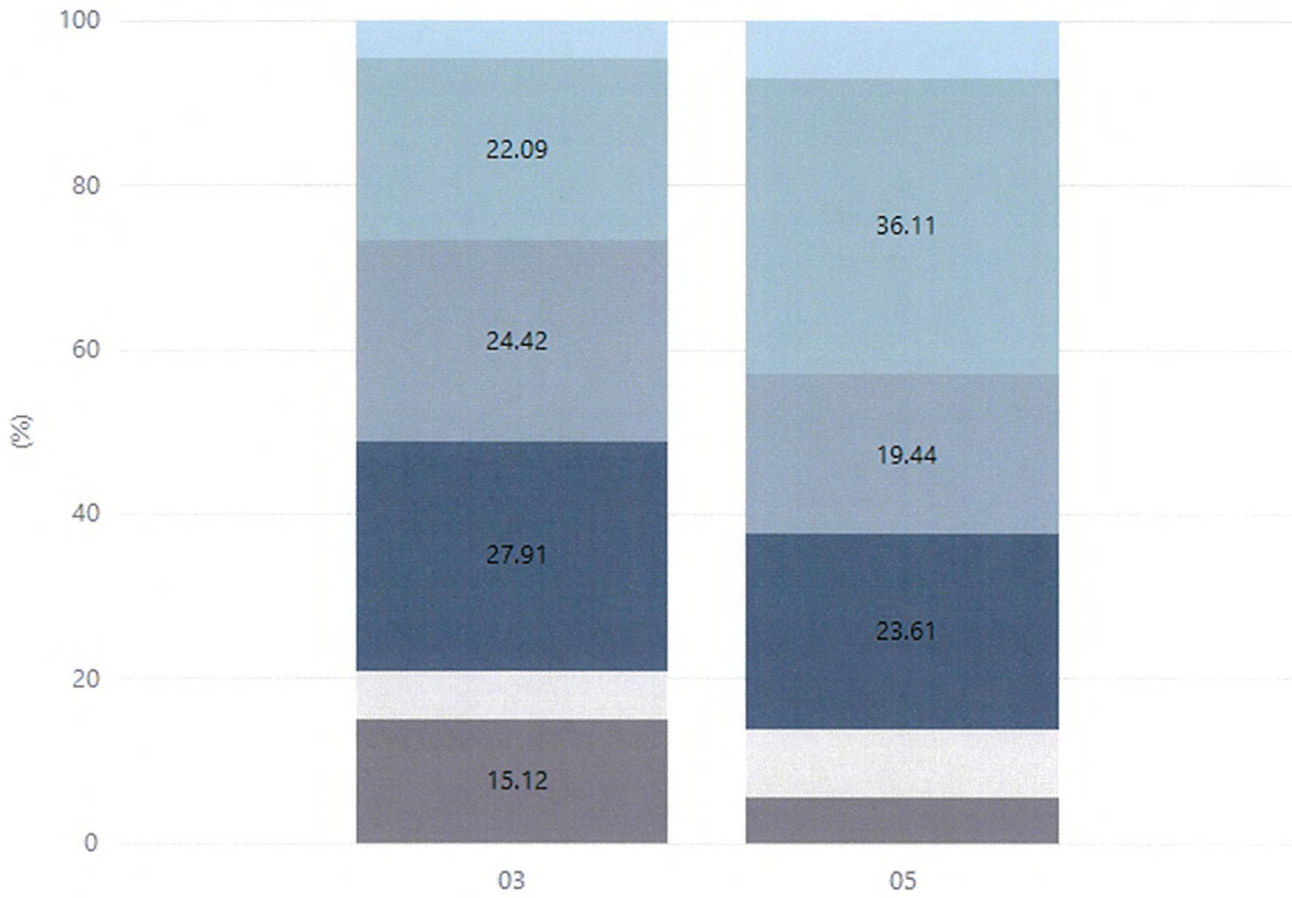
Numeracy



Year Level	03	05
Exceeding	1	
Strong	22	15
Developing	21	26
Needs Additional Support	26	18
Absent/Withdrawn	3	9
Exempt	13	4
Total	86	72

Data Source: Department for Education Assessment Data Holdings, 2023. When there are less than six students in a cohort, no data is supplied.

Reading

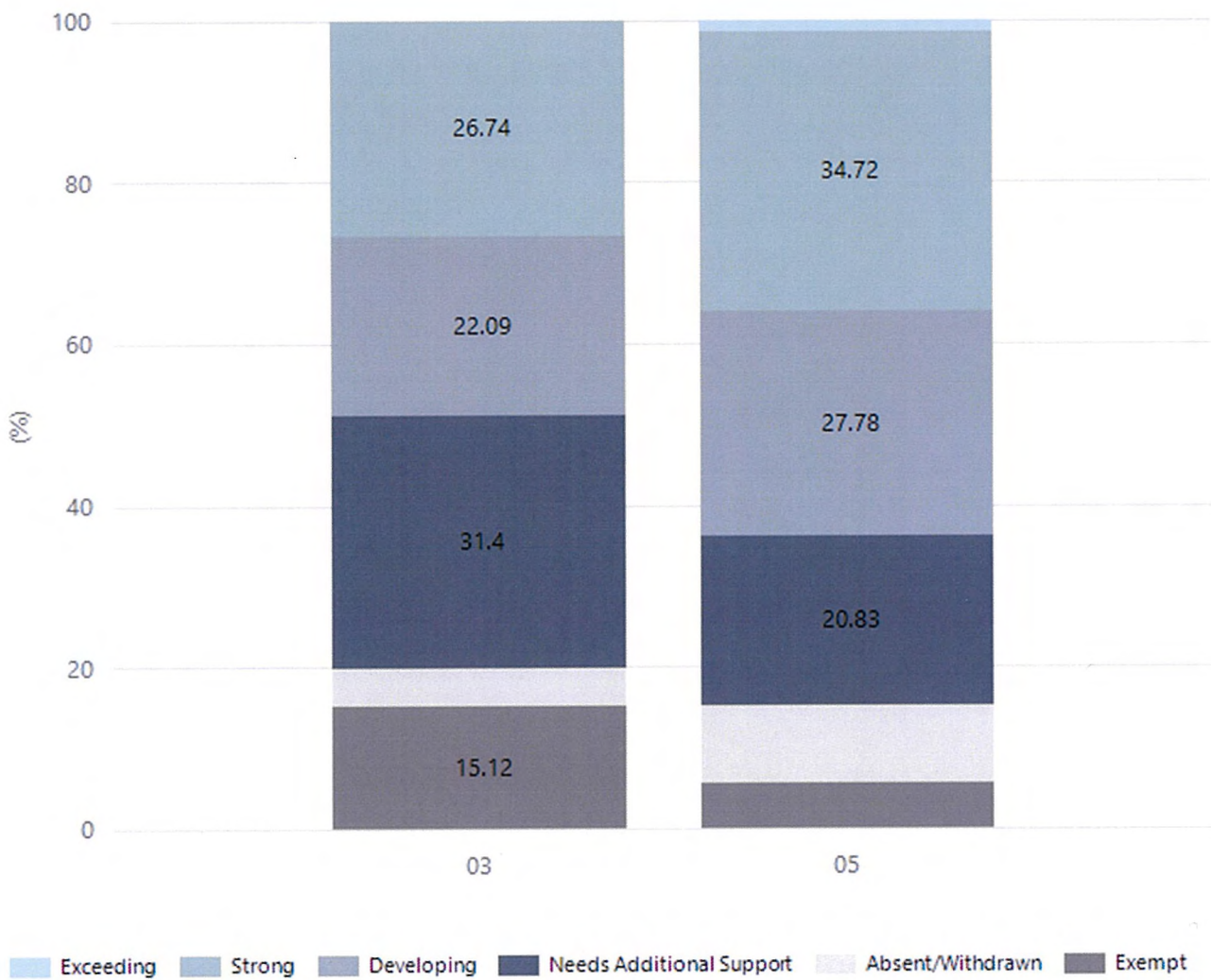


Exceeding Strong Developing Needs Additional Support Absent/Withdrawn Exempt

Year Level	03	05
Exceeding	4	5
Strong	19	26
Developing	21	14
Needs Additional Support	24	17
Absent/Withdrawn	5	6
Exempt	13	4
Total	86	72

Data Source: Department for Education Assessment Data Holdings, 2023. When there are less than six students in a cohort, no data is supplied.

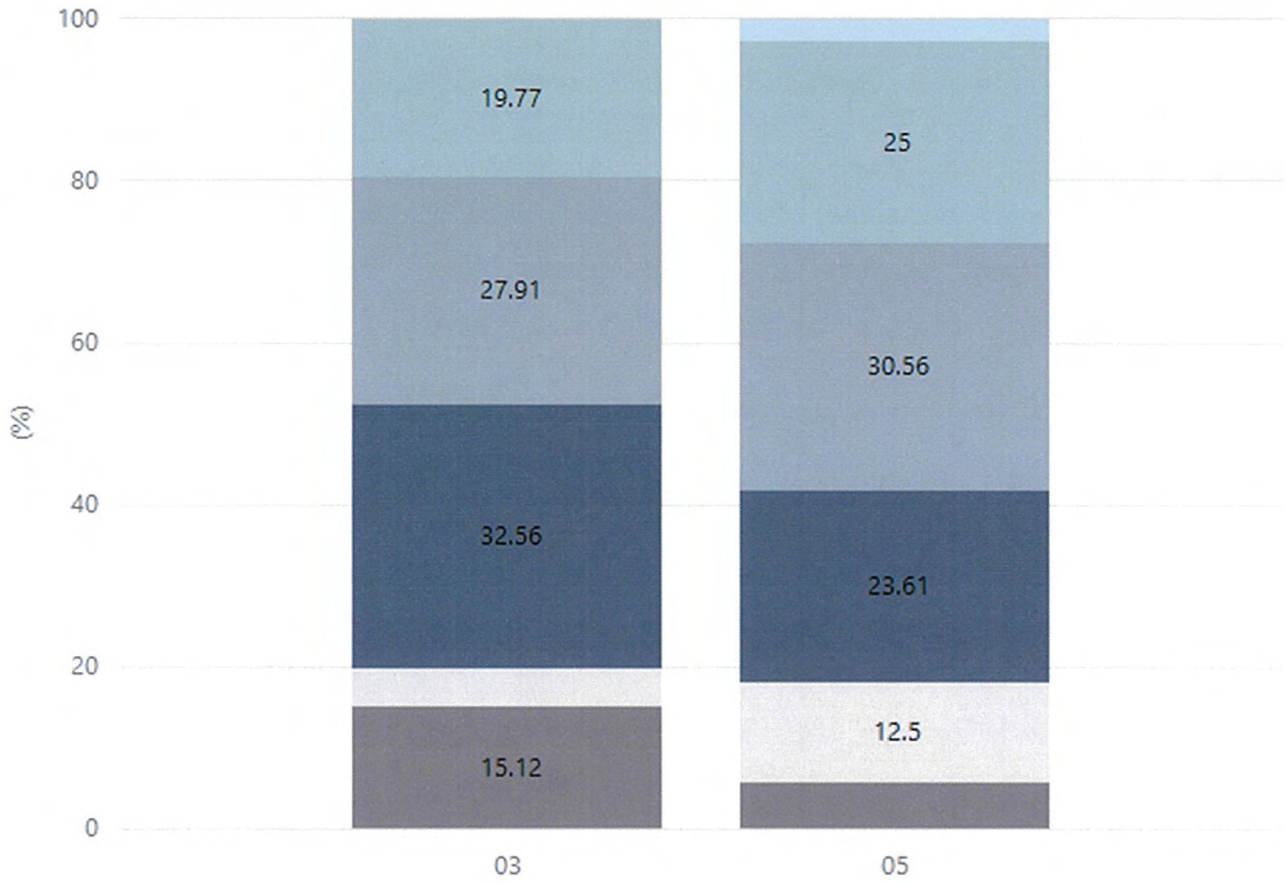
Writing



Year Level	03	05
Exceeding		1
Strong	23	25
Developing	19	20
Needs Additional Support	27	15
Absent/Withdrawn	4	7
Exempt	13	4
Total	86	72

Data Source: Department for Education Assessment Data Holdings, 2023. When there are less than six students in a cohort, no data is supplied.

Grammar

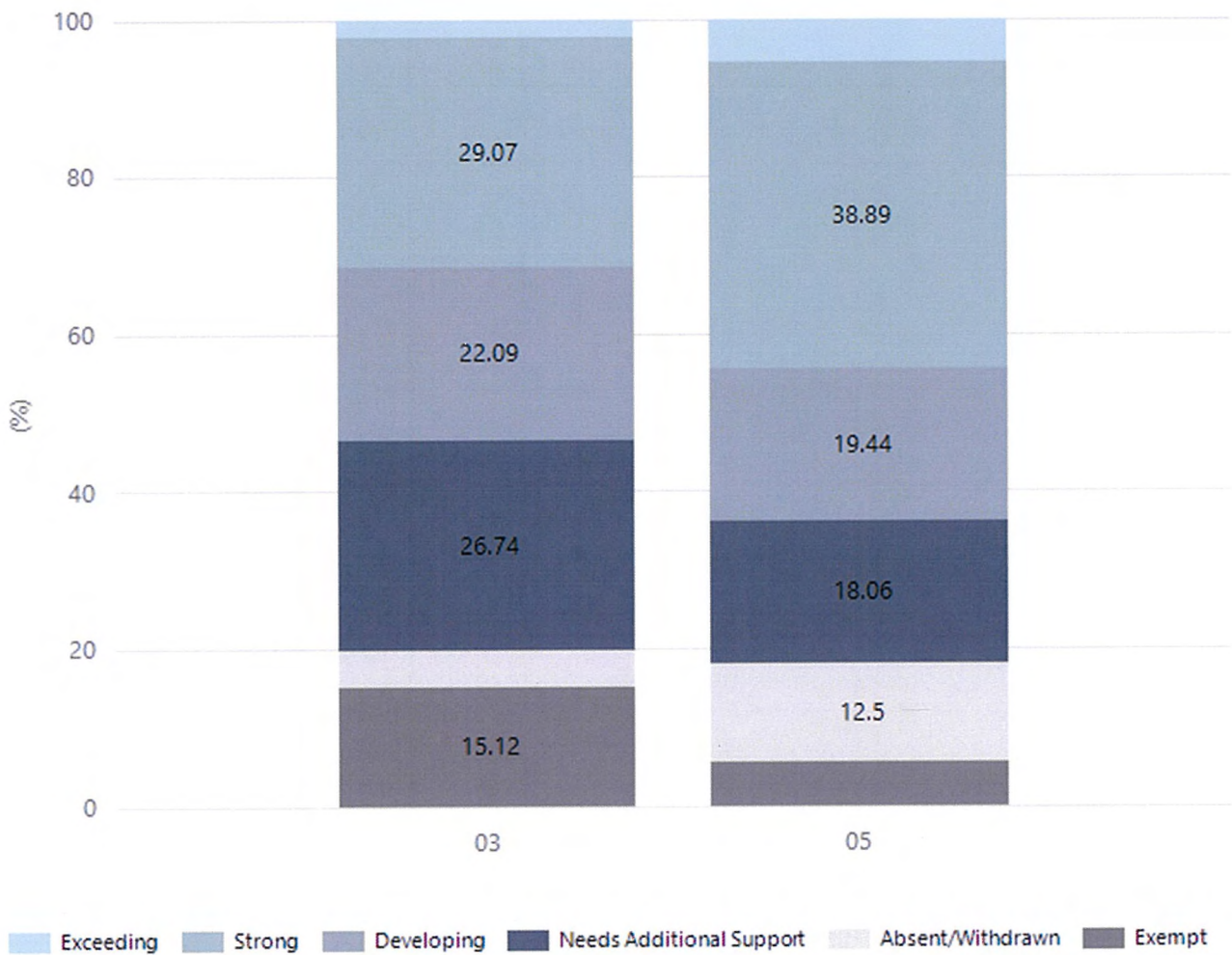


Exceeding Strong Developing Needs Additional Support Absent/Withdrawn Exempt

Year Level	03	05
Exceeding		2
Strong	17	18
Developing	24	22
Needs Additional Support	28	17
Absent/Withdrawn	4	9
Exempt	13	4
Total	86	72

Data Source: Department for Education Assessment Data Holdings, 2023. When there are less than six students in a cohort, no data is supplied.

Spelling

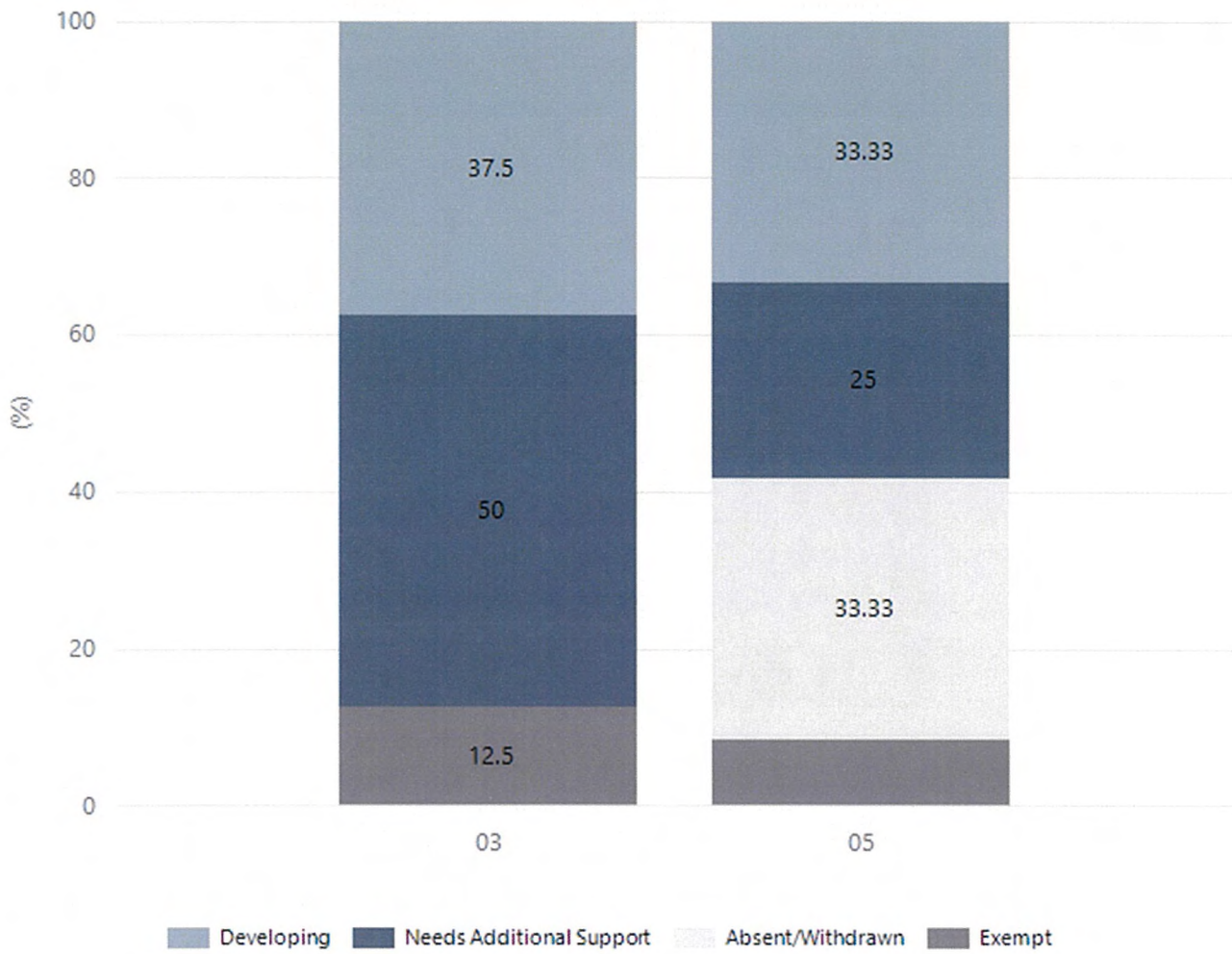


Year Level	03	05
Exceeding	2	4
Strong	25	28
Developing	19	14
Needs Additional Support	23	13
Absent/Withdrawn	4	9
Exempt	13	4
Total	86	72

Data Source: Department for Education Assessment Data Holdings, 2023. When there are less than six students in a cohort, no data is supplied.

NAPLAN Proficiency - Aboriginal Learners

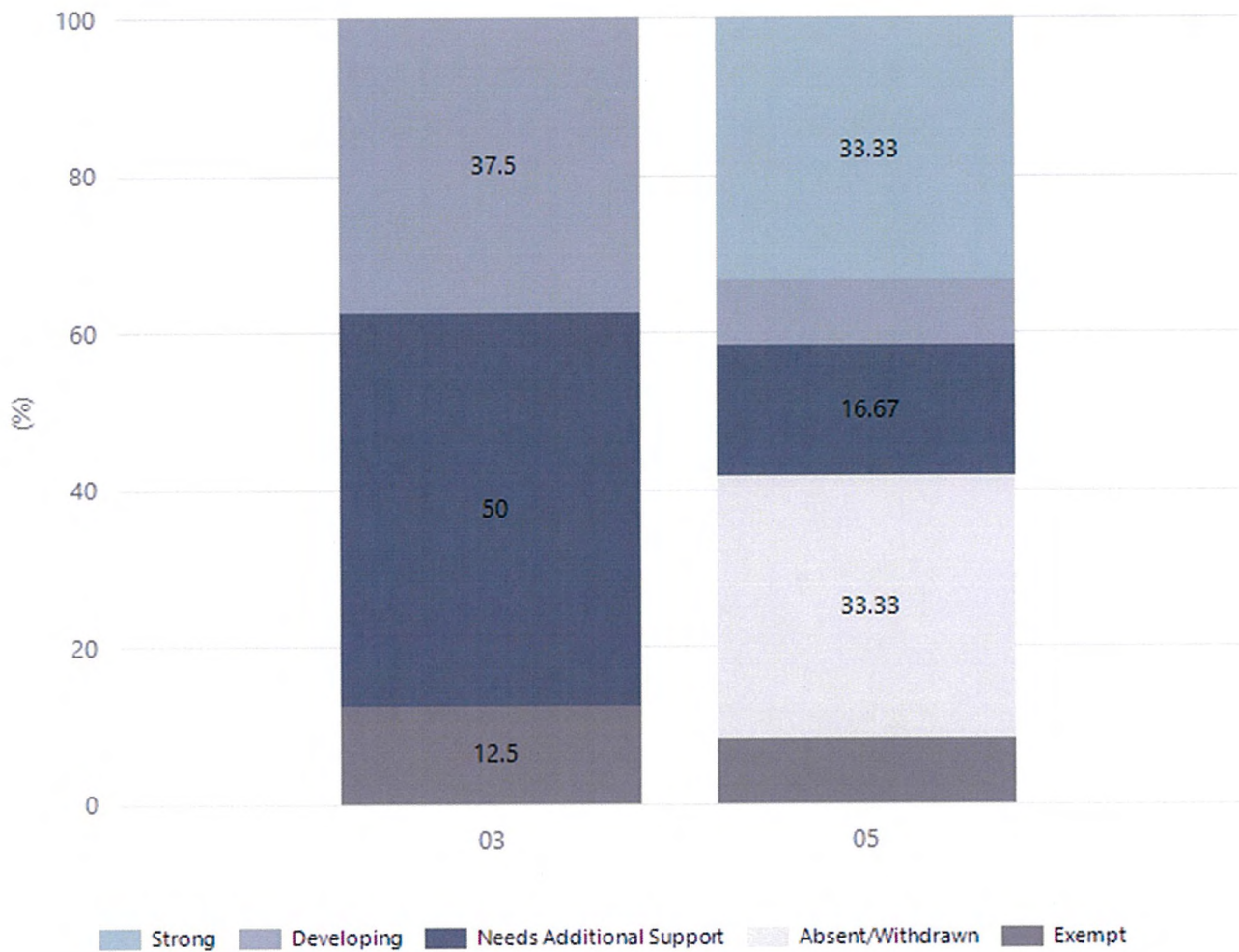
Numeracy



Year Level	03	05
Developing	3	4
Needs Additional Support	4	3
Absent/Withdrawn		4
Exempt	1	1
Total	8	12

Data Source: Department for Education Assessment Data Holdings, 2023. When there are less than six students in a cohort, no data is supplied. Only data for Aboriginal learners is displayed.

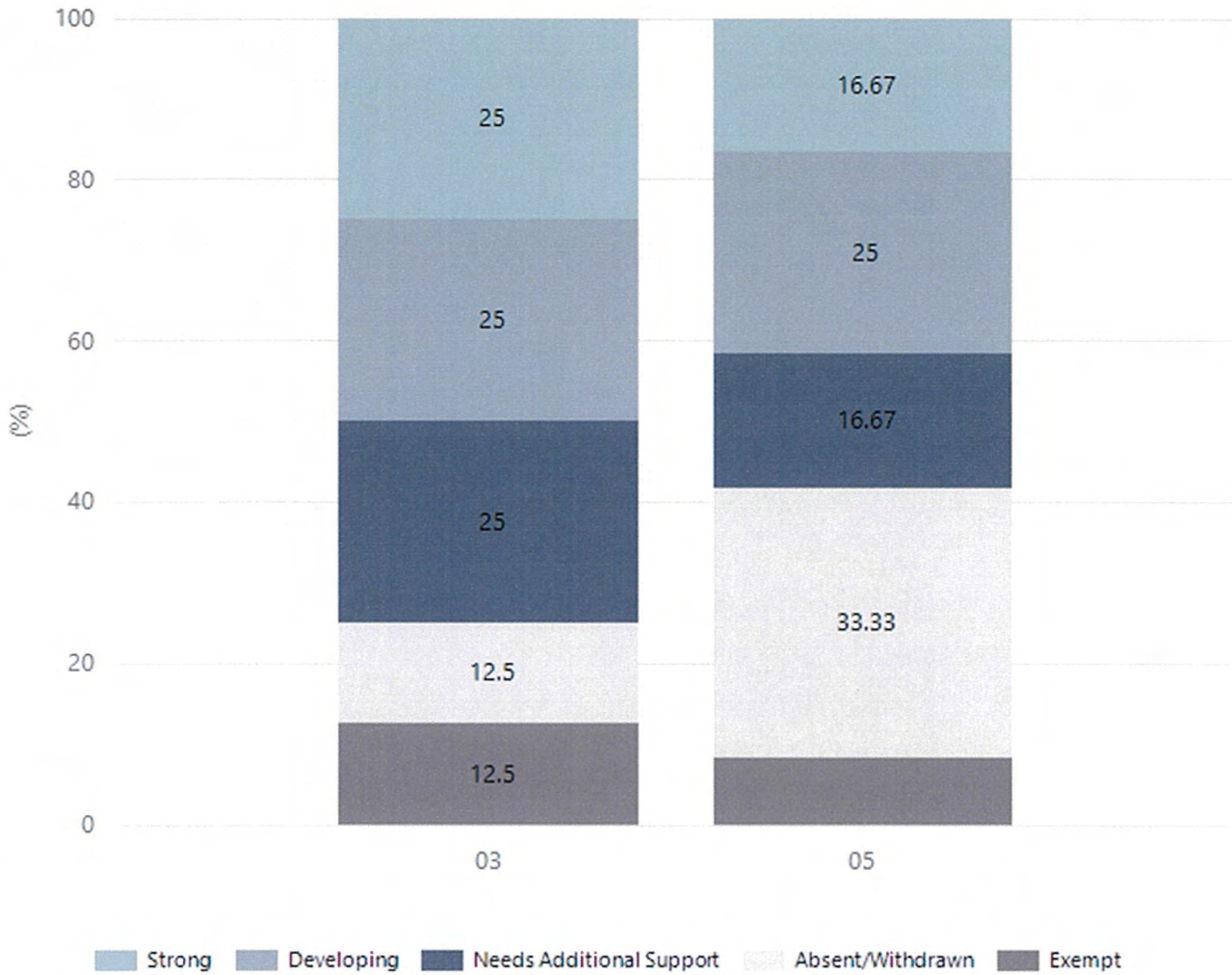
Reading



Year Level	03	05
Strong		4
Developing	3	1
Needs Additional Support	4	2
Absent/Withdrawn		4
Exempt	1	1
Total	8	12

Data Source: Department for Education Assessment Data Holdings, 2023. When there are less than six students in a cohort, no data is supplied. Only data for Aboriginal learners is displayed.

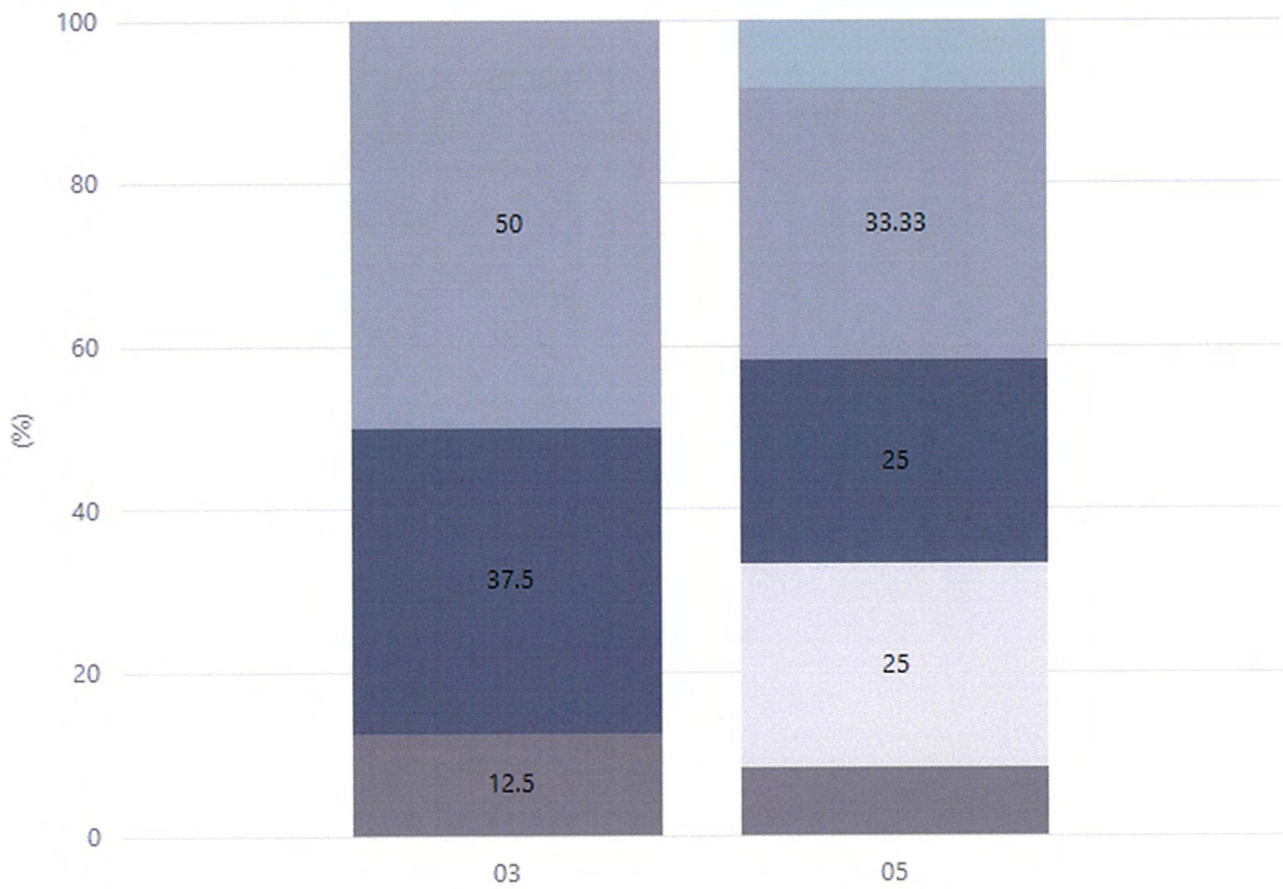
Writing



Year Level	03	05
Strong	2	2
Developing	2	3
Needs Additional Support	2	2
Absent/Withdrawn	1	4
Exempt	1	1
Total	8	12

Data Source: Department for Education Assessment Data Holdings, 2023. When there are less than six students in a cohort, no data is supplied. Only data for Aboriginal learners is displayed.

Grammar

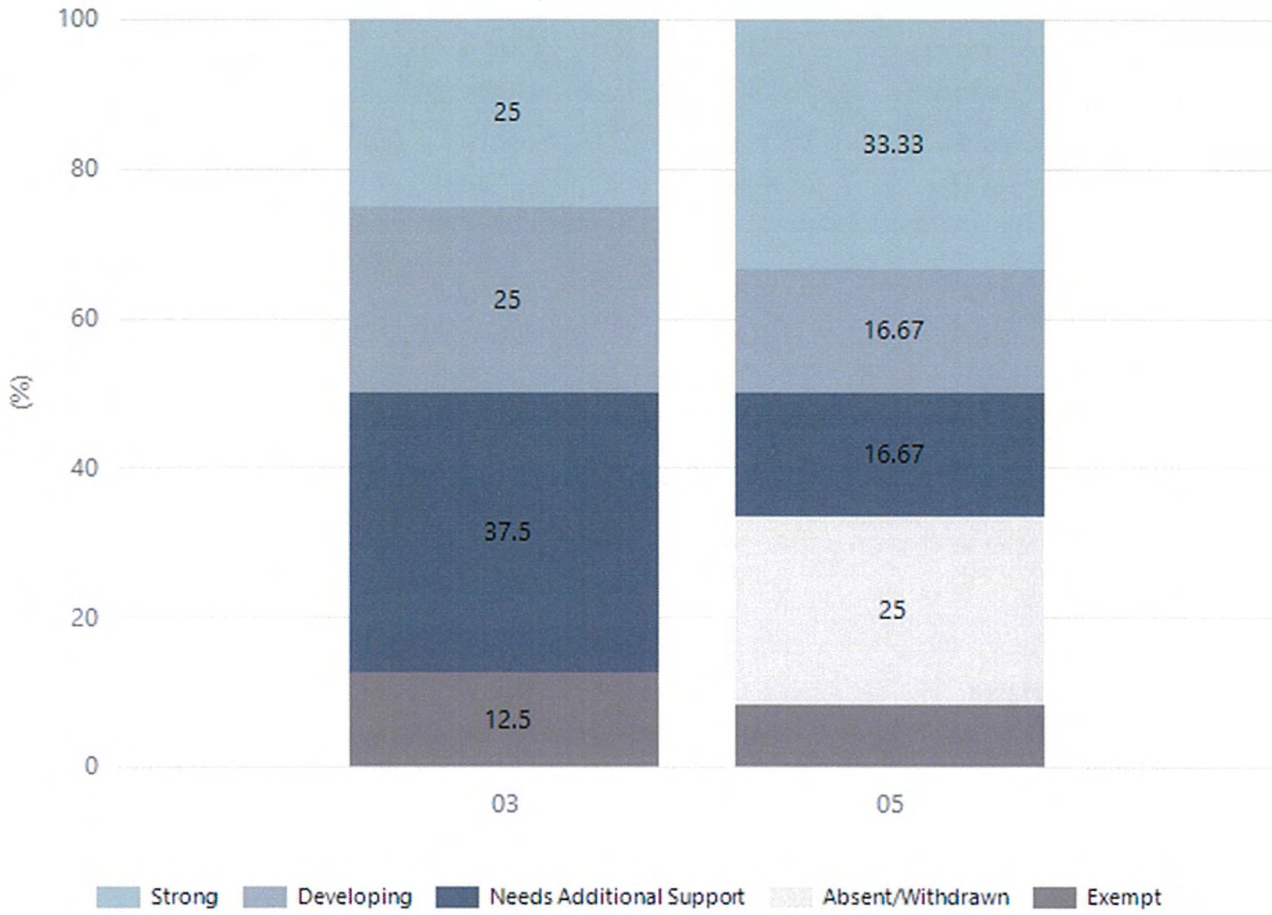


■ Strong
 ■ Developing
 ■ Needs Additional Support
 ■ Absent/Withdrawn
 ■ Exempt

Year Level	03	05
Strong		1
Developing	4	4
Needs Additional Support	3	3
Absent/Withdrawn		3
Exempt	1	1
Total	8	12

Data Source: Department for Education Assessment Data Holdings, 2023. When there are less than six students in a cohort, no data is supplied. Only data for Aboriginal learners is displayed.

Spelling



Year Level	03	05
Strong	2	4
Developing	2	2
Needs Additional Support	3	2
Absent/Withdrawn		3
Exempt	1	1
Total	8	12

Data Source: Department for Education Assessment Data Holdings, 2023. When there are less than six students in a cohort, no data is supplied. Only data for Aboriginal learners is displayed.

Preschool Attendance

	Term 1	Term 2	Term 3	Term 4
2020 centre	89%	79.3%	83.7%	87.3%
2021 centre	86.9%	83.8%	86.5%	84.7%
2022 centre	79.1%	77.4%	76.8%	84.5%
2023 centre	85.9%	82.7%	84.1%	80.2%
2020 state	89.1%	81.8%	84.6%	85.8%
2021 state	87.3%	85.3%	87.1%	84.5%
2022 state	83.6%	77.6%	77.9%	77.8%
2023 state	85.4%	82.9%	83.4%	81.4%

Based on attendances recorded in the two-week reference period each term. Data for eligible enrolments as described in the department's Enrolment policy. Attendance rates may differ to previous reporting with the transfer from calculations based on deemed attendance to actual attendance using booked hours divided by attended hours. Data Source: Department for Education Attendance Data, Semester 1 Report 2023. A blank cell indicates there we no students enrolled.

Note: Term 2 2020 data may not be available for all preschools.

School Attendance

Year Level	2021	2022	2023
Reception	85.6%	78.2%	81.1%
Year 01	87.2%	80.1%	81.4%
Year 02	87.5%	81.2%	81.9%
Year 03	86.9%	79.8%	83.9%
Year 04	87.1%	81.6%	84.3%
Year 05	85.1%	80.0%	81.9%
Year 06	85.6%	77.8%	82.0%
Year 07	80.1%		
Primary Other	81.6%	71.4%	76.9%
Total	85.7%	79.5%	82.2%

Data Source: Department for Education Attendance Data, Semester 1 Report 2023. A blank cell indicates there we no students enrolled. 'Primary Other' includes students enrolled in specialised education options. 'Secondary Other' includes students who have already spent a year at Year 12 and elected to undertake further study at Year 12.

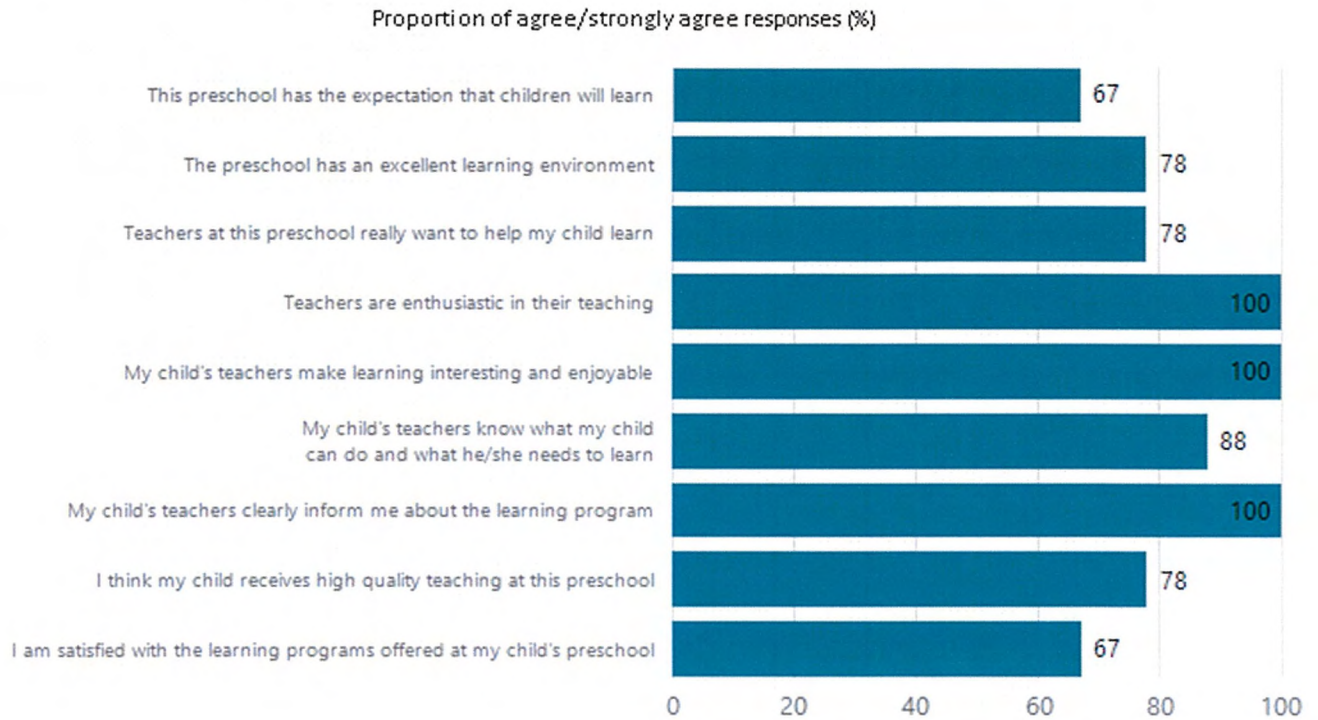
Attendance Comment

In South Australia, preschool attendance is not compulsory, but it is strongly encouraged. Preschool gives children the best opportunity to develop skills, which prepare them for school. These benefits include establishing positive routines and habits, friendships and connections as well as developing communication, problem-solving and creative skills. All children are entitled to access a preschool program over 4 terms the year before they start school.

In South Australia, all children and young people must be in school from 6 years to 16 years old. They must attend a government or non-government school full time. From age 16 to 17 however, young people must attend school or an approved learning program (such as an apprenticeship, traineeship, accredited course or university). Schools and parents must encourage and support students to come to school every day. Parents and caregivers must make sure their child is enrolled in a school, and attends school all day and everyday it is open, unless a child is sick or has an approved exemption. Teachers and leaders actively follow up when a student misses school, including recording all absences and non-attendance. All schools in South Australia have local attendance procedures governed under the Education and Children's Services Regulations 2020.

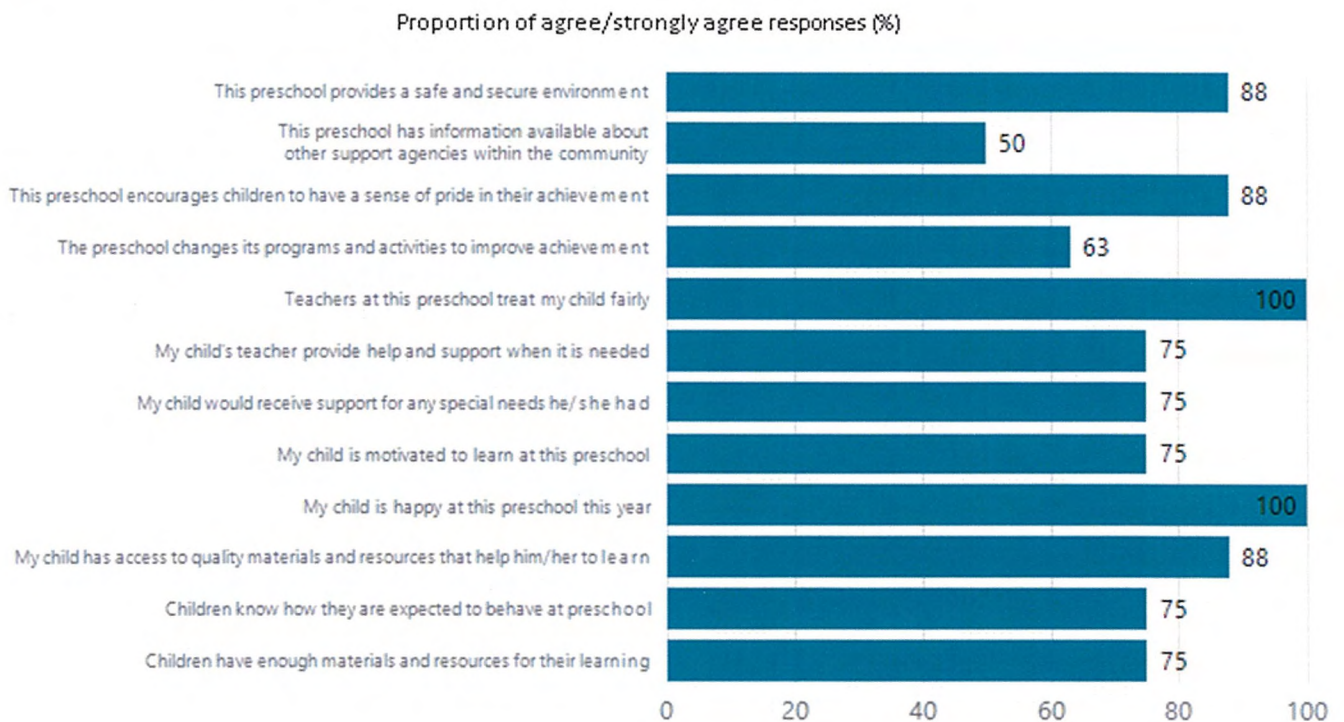
Preschool Family Opinion Survey

Quality of Teaching and Learning



Data Source: 2023 Department for Education Preschool Family Opinions Survey, Term 3 2023.

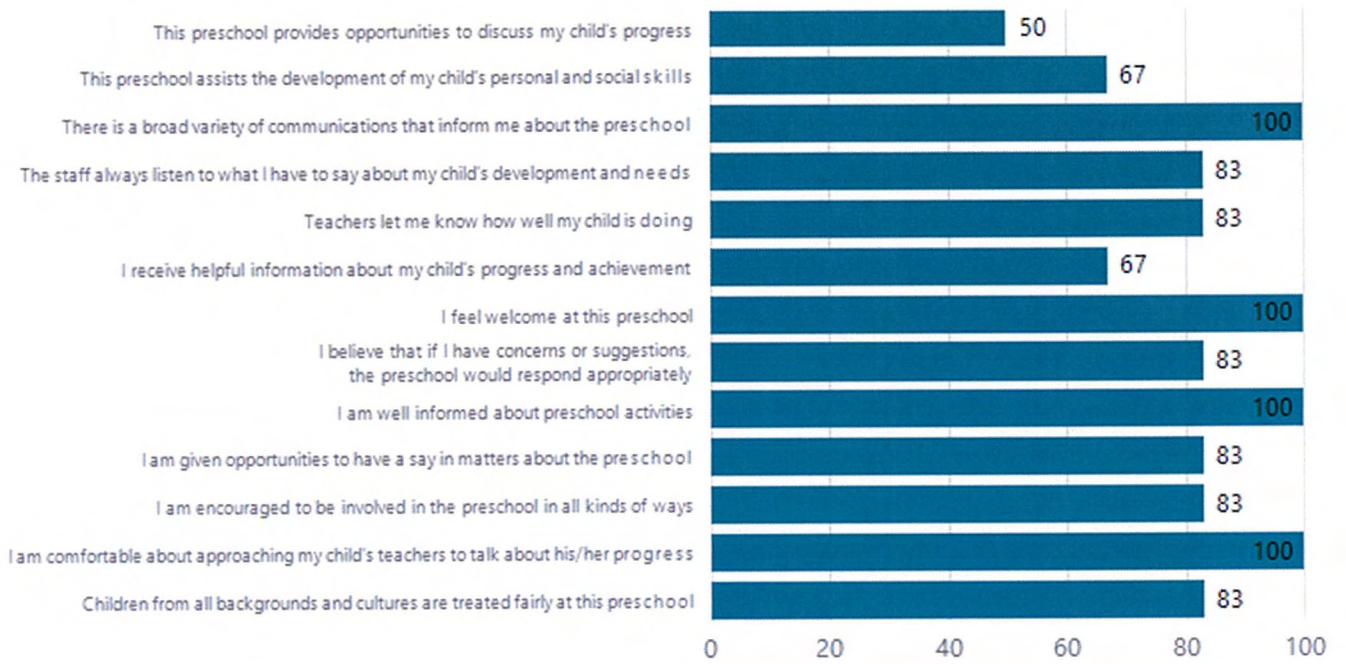
Support of Learning



Data Source: 2023 Department for Education Preschool Family Opinions Survey, Term 3 2023.

Relationships and Communication

Proportion of agree/strongly agree responses (%)



Data Source: 2023 Department for Education Preschool Family Opinions Survey, Term 3 2023.

Leadership and Decision Making

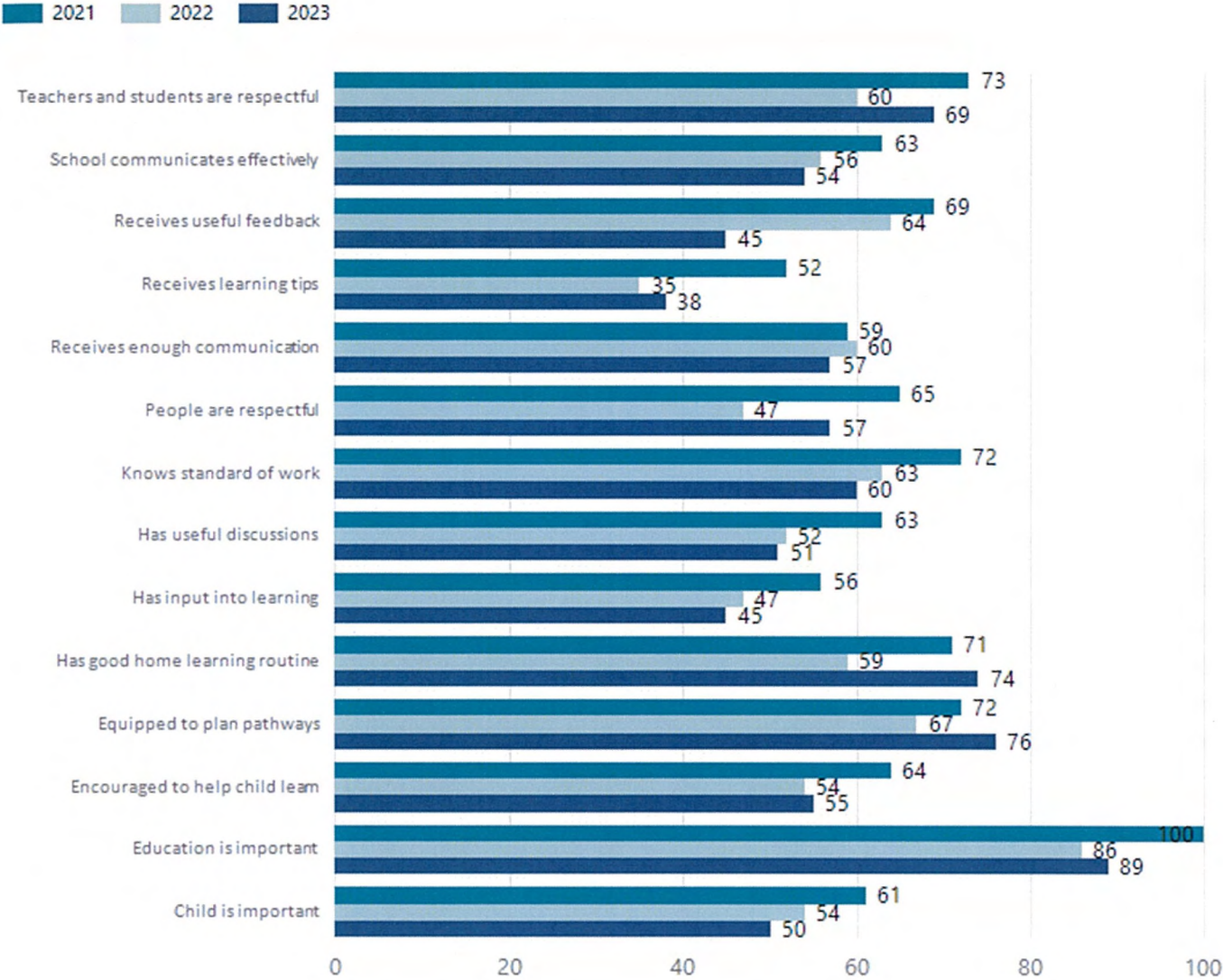
Proportion of agree/strongly agree responses (%)



Data Source: 2023 Department for Education Preschool Family Opinions Survey, Term 3 2023.

Parent Opinion Survey Results

Proportion of agree/strongly agree response(%)



Data Source: 2023 Department for Education Parent Opinions Survey, Term 3 2023.

Destination Schools

Feeder Schools (Site number - Name)	2021	2022	2023
1901 - John Hartley School B-6	75.6%	83.5%	81.7%
8033 - St Columba College		4.7%	3.9%
9999 - Unknown	14.0%		6.7%

Note: The data is collected in term 3. It does not reflect actual schools enrolled in by existing preschool children. A blank cell indicates there was no data for students enrolled.

Data Source: Department for Education Destination Data Report, 2023.

Intended Destination

Leave Reason	Number	%
NG - ATTENDING NON-GOV SCHOOL IN SA	7	16.0%
TG - TRANSFERRED TO SA GOVERNMENT SCHOOL	36	84.0%

Data Source: Department for Education Destination Data Report, 2023. Data extract term 3 2023. Data shows recorded destinations for students that left the school in the previous year. Data is uploaded by schools in term 3 and may not reflect final or total figures at time of report creation.

Highest Qualifications held by the teaching workforce and workforce composition

All teachers at this school are qualified and registered with the SA Teachers Registration Board.

Qualification Level	Number of Qualifications
Bachelor's degrees or Diplomas	40
Postgraduate Qualifications	15

Data Source: Data extracted from Mandatory Workforce Information Collections as on the last pay date of June 2023. As self-reported by staff in the system.

Please note: Data includes staff who are Actively employed and on extended paid leave. Please note only the highest qualification of the Teaching staff is reported. Excludes any number of other certifications earned.

Workforce composition including indigenous staff

	Teaching Staff		Non-Teaching Staff	
	Indigenous	Non-Indigenous	Indigenous	Non-Indigenous
Full-Time Equivalents	0.0	49.7	2.1	28.5
Persons	0.0	55.0	3.0	41.0

Data Source: Data extracted from Mandatory Workforce Information Collection as on the last pay date of June 2023.

Please note: Data includes staff who are actively employed and on extended paid leave. "Indigenous category" is self-reported by staff in the system.

Financial Statement

Funding Source	Amount
Grants: State	\$9,558,057
Grants: Commonwealth	\$21,400
Parent Contributions	\$161,735
Fund Raising	\$8,349
Other	\$11,747

Data Source: School supplied data.

